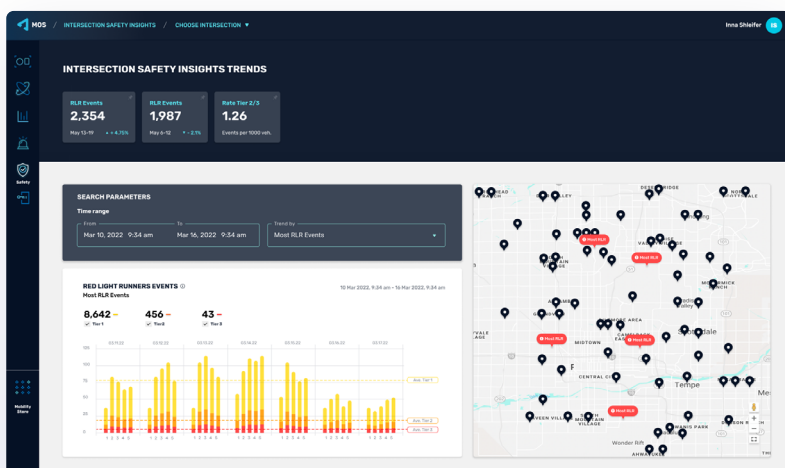




# notraffic™ Intersection Safety Insights (ISI)



ISI provides detailed analysis and insights into violations by red light runners, enabling strategic initiatives for mitigating risks.

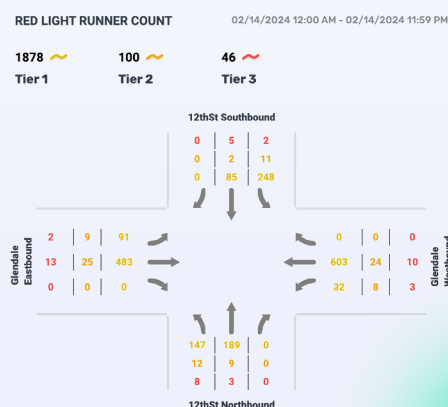
**3** People\* Killed Daily

**165,000** People\* Injured Annually

\* Including pedestrians, cyclists and motorists | Source: Federal Highway Administration 2020

## Background

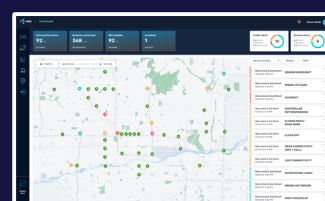
ISI is a safety-oriented software application that correlates traffic signal phases with vehicle movements across the stop line, enabling precise tracking of red light runners. It provides comprehensive and comparative insights into red light running behavior at intersections, with the goal of significantly reducing the frequency of such accidents and promoting safer roads nationwide.



## AI Mobility Platform

The Intersection Safety Insights (ISI) application can be activated from the Mobility Store, that provides a diverse range of applications.

The Mobility Store is part of the NoTraffic AI Mobility Platform, which integrates AI-powered software and hardware at the edge under a cloud-based Mobility OS (Operating System) to address current and future transportation needs.



Edge Devices & AI Detection

Mobility OS

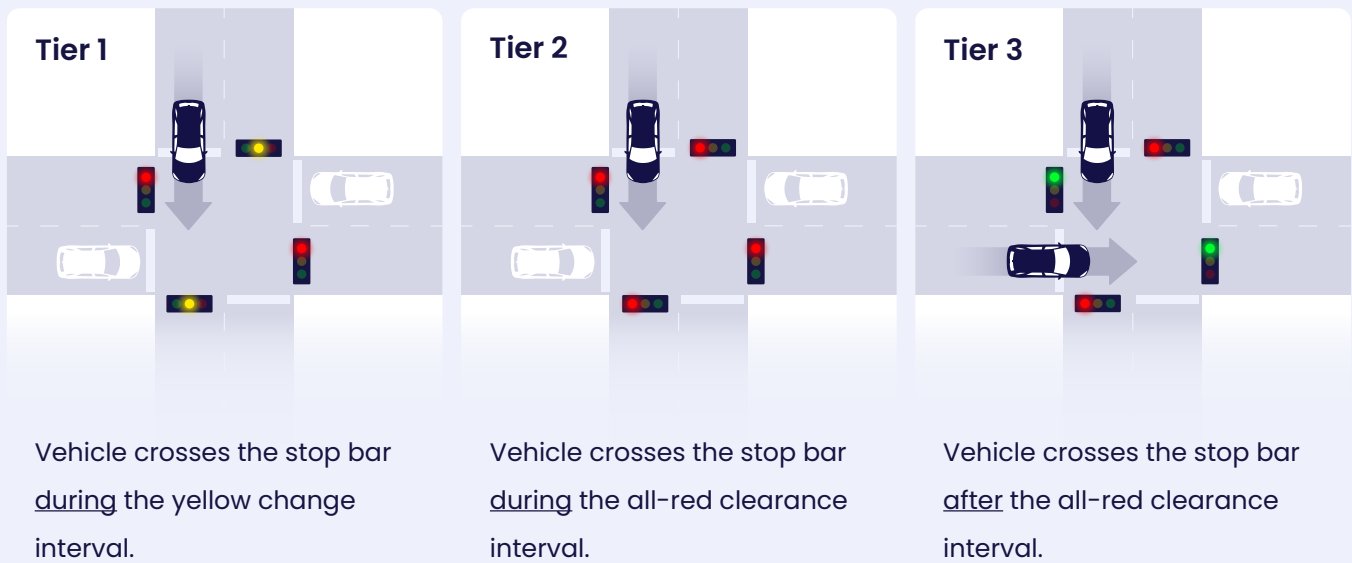


Mobility Store



NoTraffic Operations Center

## Our system can detect the following TIERS of red light running (RLR) events:



### Top Line Benefits

- 1** Enables traffic practitioners to identify existing issues.
- 2** Enables traffic practitioners to identify existing issues.
- 3** Enables traffic practitioners to identify existing issues.

### Features and Capabilities

- Conducts in-depth analysis of trends and problematic areas contributing to incidents of red light running at both intersection and city-wide levels.
- Filters incidents by customizable parameters such as time of day and frequency per month/week/day/hour.
- Categorizes incidents by classification type (Tiers 1, 2, 3).
- Categorizes incidents by type of roadway user.
- Provides comparative analysis to evaluate the effectiveness of various countermeasures against red light running.
- Offers actionable insights aimed at reducing the potential risk of future occurrences of red light running.