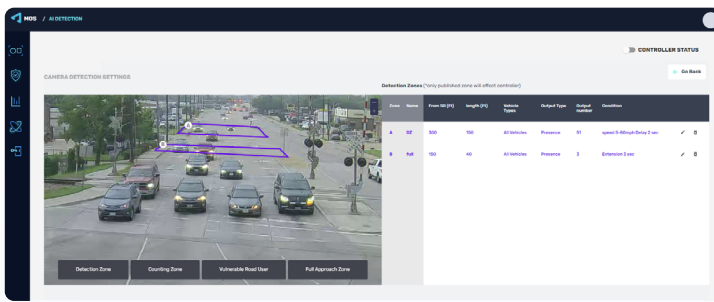




# notraffic™ Dilemma Zone Detection



A dilemma zone at intersections is where a vehicle is too far to safely proceed through the intersection before the light turns red but too close to stop comfortably without sudden, potentially dangerous deceleration. This can cause rear end crashes and red light running.

To mitigate these risks, NoTraffic's AI Mobility Platform includes the Dilemma Zone Detection application. This innovative solution extends the green light, giving drivers more time to clear the intersection safely.

## Benefits

- **Enhanced Safety**  
Accurate detection based on radar technology up to 720 feet prevents accidents caused by driver uncertainty at yellow lights.
- **Robust Performance**  
Operates effectively even in harsh weather conditions due to radar-based technology.
- **Cost-Effective Solution**  
Utilizes existing edge devices to save on separate hardware costs, reduce ongoing operational expenses, and ensure reliable performance.

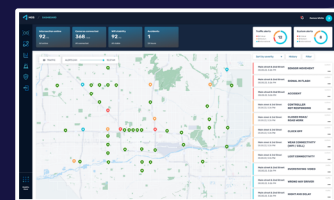
## Features

- **Implemented by Multiple Trip Lines**  
Allows the user to define multiple trip lines, each set at a different distance from the stop line, correlating distance and speed as narrow detection zones.
- **Radar Sensor-Based Detection**  
Utilizes radar sensors with an advance detection range of up to 720 ft.

## AI Mobility Platform

The Dilemma Zone Detection application can be activated from the Mobility Store, that provides a diverse range of applications.

The Mobility Store is part of the NoTraffic AI Mobility Platform, which integrates AI-powered software and hardware at the edge under a cloud-based Mobility OS (Operating System) to address current and future transportation needs.



Edge Devices & AI Detection

Mobility OS



Mobility Store



NoTraffic Operations Center